

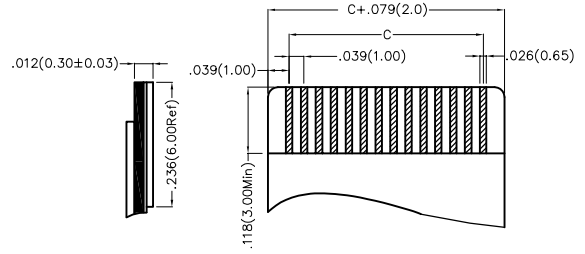
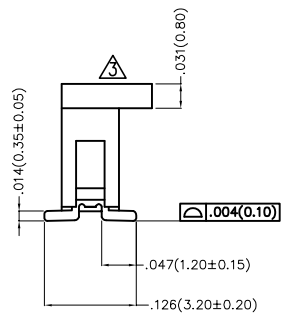
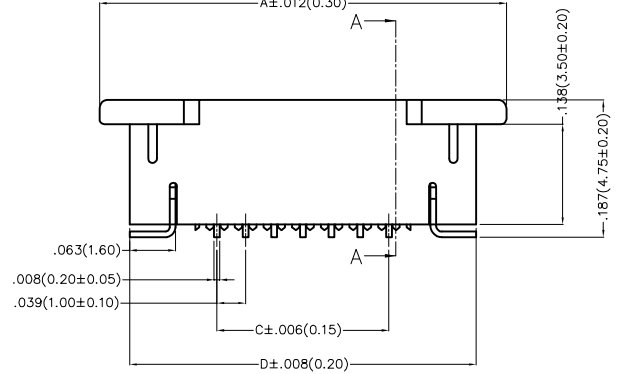
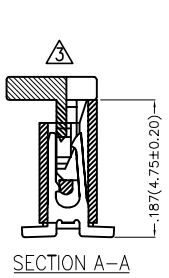
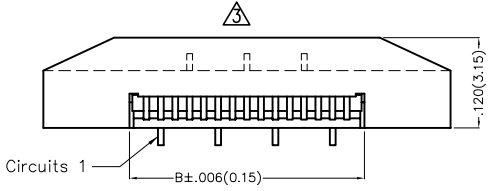
Circuits (n)	Part No.	Dimensions(in/mm)			
		A	B	C	D
6	FFC10046-06SSA126W5M	.520(13.20)	.283(7.20)	.197(5.00)	.437(11.10)
10	FFC10046-10SSA126W5M	.677(17.20)	.441(11.20)	.354(9.00)	.594(15.10)
16	FFC10046-16SSA126W5M	.913(23.20)	.677(17.20)	.591(15.00)	.831(21.10)

REV	LOCATIONS	DESCRIPTION	DATE	REVISER	APPD
1	△	Changed the structure of 4-6 circuits	29/SEP/21	KATE	CHERRY
2	△	MPQ: Change 1,000 pcs into 900 pcs	24/FEB/22	KATE	CHERRY
3	△	Changed the structure Update Packaging	02/APR/26	MATT	LEO

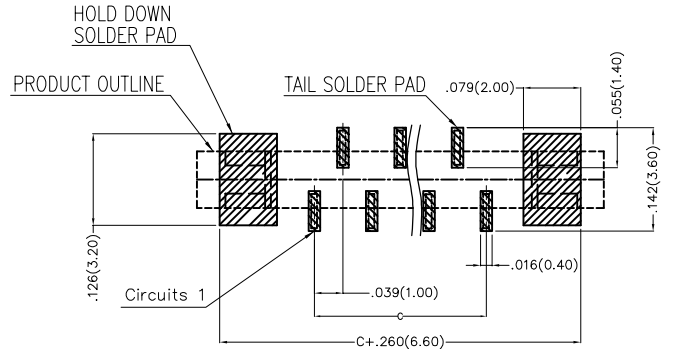
**SPECIFICATIONS**

**Electrical**  
 Current Rating: 0.5A AC(rms)/DC  
 Voltage Rating: 50V AC(rms)/DC  
 Contact Resistance: 30 mΩ Max  
 Insulation Resistance: 100 MΩ MIN  
 Withstanding Voltage: 250V AC r.m.s  
 Temperature Range-Operating: -25°C~+85°C

**Material**  
 Housing: PA46 UL94V-0  
 Actuator: High Temperature Thermoplastic UL94V-0  
 Contact: Copper Alloy/Tin Plated



Applicable FFC Recommended Dimension



A-Positive Needle  
Recommended P.C.Board Layout  
 Tolerances: ±0.02(0.05)

**Ordering Information**

FFC 100 46 - XX S S A 1 2 6 W5 M  
 1 2 3 4 5 6 7 8 9 10 11 12

1 Category FFC-FPC	2 Series Number 100-Pitch1.00mm	3 Distinction No. 46	4 Circuits XX	5 Assemble Layout S-SMT	6 Entry Angle S-180° Vertical
7 Contact Position A-Positive Needle	8 ZIF 1-ZIF	9 Plating 2-Tin Plated	10 Material-Resin 6-PA46	11 Color-Resin W5-Housing: Natural, Actuator: Black	12 Packaging M-Reel

THIRD ANGLE PROJECTION	GENERAL TOLERANCES (UNLESS SPECIFIED)		APPROVE BY FRANK	DATE 5/JUL/13	PART NO. FFC10046-XXSSA126W5M	ITEM NO. FFC10046	 Building Technology Cornerstone	
	DESIGN UNITS Inch (metric)	X.±.012(0.30)	X.±5'	CHECKED BY CHERRY	DATE 5/JUL/13	TITLE FPC/FFC Connector 1.00mm Positive Needle SMT		
SCALE 5:1		X.XX±.006(0.15)	.XX±1'	DRAWN BY JACOB	DATE 5/JUL/13	THIS DRAWING CONTAINS INFORMATION THAT IS PROPRIETARY TO TXGA INDUSTRIAL ELECTRONICS(S.Z)CO.,LTD AND SHOULD NOT BE USED WITHOUT WRITTEN PERMISSION		REV 3

Circuits (n)	Part No.	Dimensions(in./mm)			
		A	B	C	D
6	FFC10046-06SSB126W5M	.520(13.20)	.283(7.20)	.197(5.00)	.437(11.10)
10	FFC10046-10SSB126W5M	.677(17.20)	.441(11.20)	.354(9.00)	.594(15.10)
16	FFC10046-16SSB126W5M	.913(23.20)	.677(17.20)	.591(15.00)	.831(21.10)

REV	LOCATIONS	DESCRIPTION	DATE	REVISER	APPD
1	△	Changed the structure of 4-6 circuits	29/SEP/21	KATE	CHERRY
2	△	MPQ: Change 1,000 pcs into 900 pcs	24/FEB/22	KATE	CHERRY
3	△	Changed the structure Update Packaging	02/APR/26	MATT	LEO

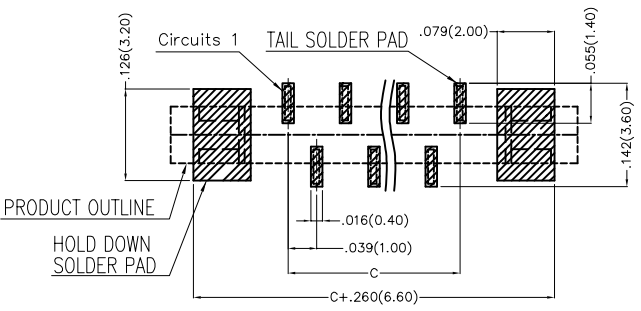
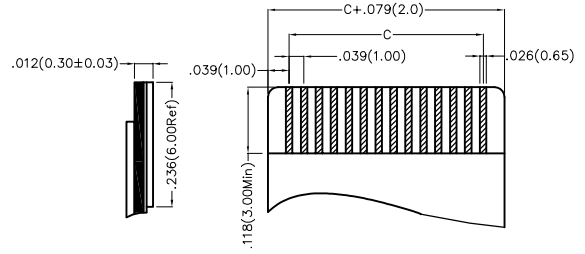
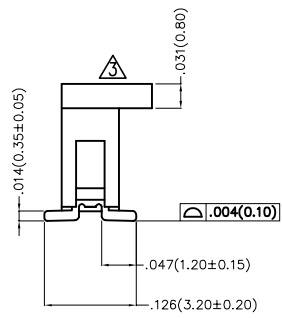
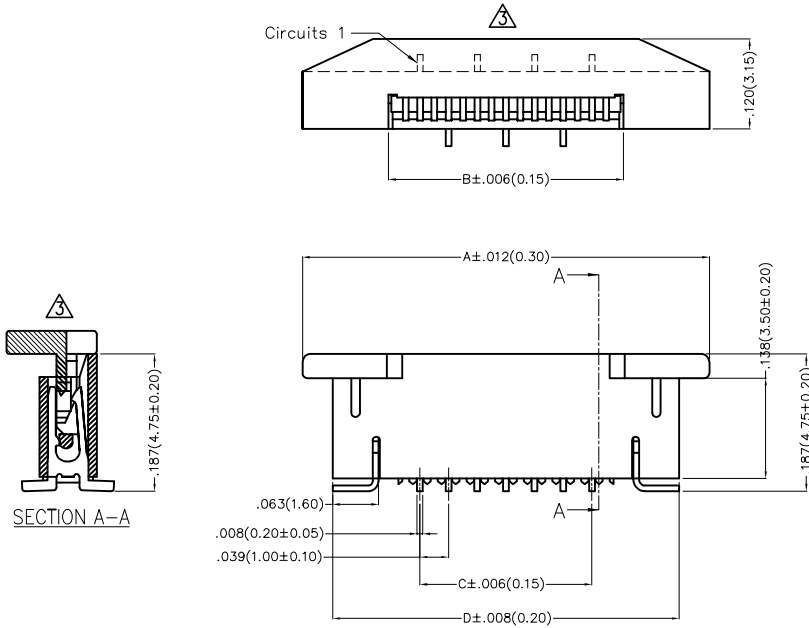
**SPECIFICATIONS**

**Electrical**

Current Rating: 0.5A AC(rms)/DC  
Voltage Rating: 50V AC(rms)/DC  
Contact Resistance: 30 mΩ Max  
Insulation Resistance: 100 MΩ MIN  
Withstanding Voltage: 250V AC r.m.s  
Temperature Range-Operating: -25°C~+85°C

**Material**

Housing: PA46 UL94V-0  
Actuator: High Temperature Thermoplastic UL94V-0  
Contact: Copper Alloy/Tin Plated



B-Versa Needle  
Recommended P.C.Board Layout  
Tolerances: ±0.02(0.05)

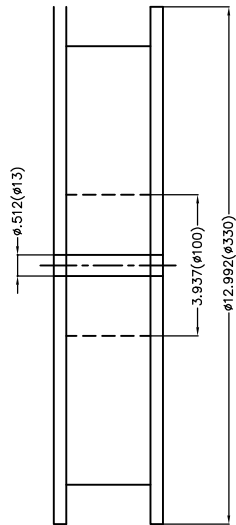
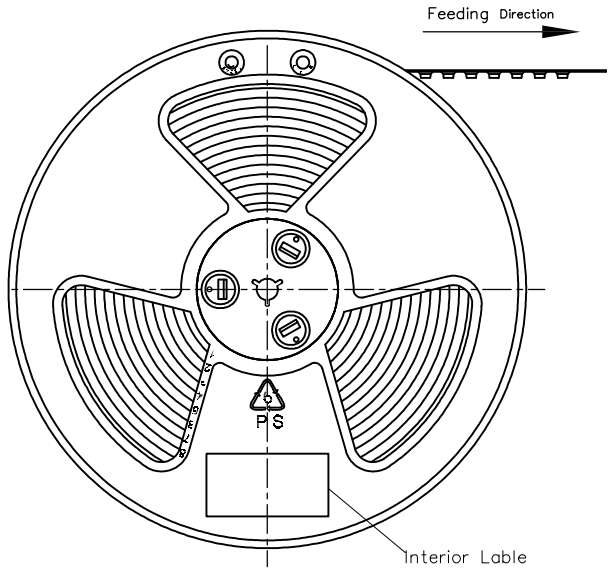
**Ordering Information**

FFC 100 46 - XX S S B 1 2 6 W5 M  
1 2 3 4 5 6 7 8 9 10 11 12

1 Category FFC-FPC	2 Series Number 100-Pitch1.00mm	3 Distinction No. 46	4 Circuits XX	5 Assemble Layout S-SMT	6 Entry Angle S-180° Vertical
7 Contact Position B-Versa Needle	8 ZIF 1-ZIF	9 Plating 2-Tin Plated	10 Material-Resin 6-PA46	11 Color-Resin W5-Housing: Natural, Actuator: Black	12 Packaging M-Reel

THIRD ANGLE PROJECTION	GENERAL TOLERANCES (UNLESS SPECIFIED)		APPROVE BY FRANK	DATE 5/JUL/13	PART NO. FFC10046-XXSSB126W5M	ITEM NO. FFC10046	
	DESIGN UNITS Inch (metric)	X.±.012(0.30)	X.±5'	CHECKED BY CHERRY	DATE 5/JUL/13	TITLE FPC/FFC Connector 1.00mm Versa Needle SMT	
SCALE 5:1		SIZE A4	X.XX±.006(0.15)	.XX±1'	DRAWN BY JACOB	DATE 5/JUL/13	THIS DRAWING CONTAINS INFORMATION THAT IS PROPRIETARY TO TXGA INDUSTRIAL ELECTRONICS(S.Z)CO.,LTD AND SHOULD NOT BE USED WITHOUT WRITTEN PERMISSION
		X.XXX±.004(0.10)	.XXX±0.5'			REV 3	SHEET NO. 2/3

REV	LOCATIONS	DESCRIPTION	DATE	REVISER	APPD

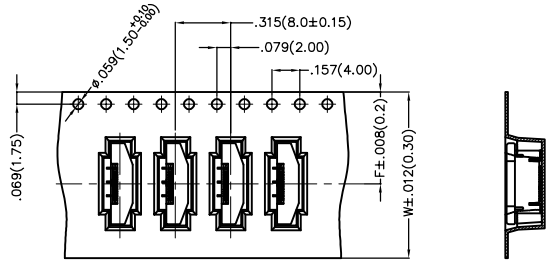
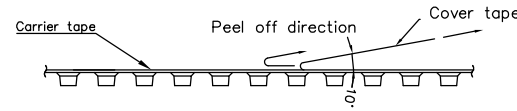
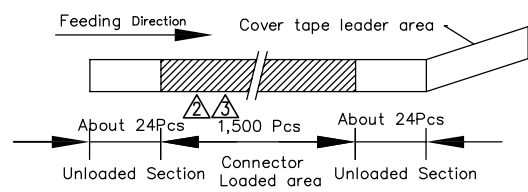


Note:

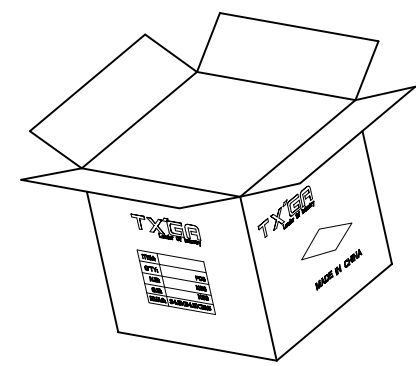
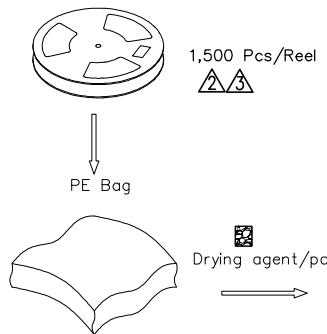
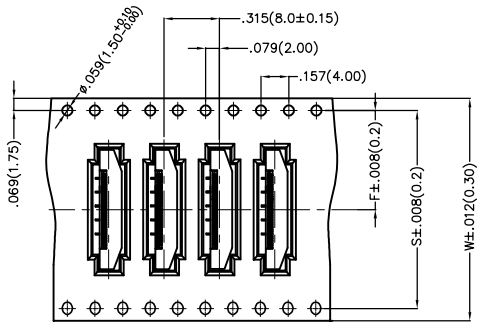
- 10 sprocket hole cumulative tolerance  $\pm 0.2$
- Carrier camber is within 1.0mm in 250mm
- Material: Transparent Conductive polystyrene Alloy 100% recyclable
- All dimensions meet EIA-481-3 requirements
- Peel off force of cover tape & carrier tape: 10g~130g (0.1N~1.3N)
- Component load per 13" reel: 1,500 pcs



Circuits (n)	Dimensions(in/mm)		
	W	F	S
6	.945(24.0)	.453(11.5)	—
10	1.260(32.0)	.561(14.25)	1.033(28.50)
16	1.732(44.0)	.797(20.25)	1.594(40.50)



Feeding Direction



<p>THIRD ANGLE PROJECTION</p>	GENERAL TOLERANCES (UNLESS SPECIFIED)		APPROVE BY	DATE	PART NO.	ITEM NO.	<p><b>TXGA</b> Building Technology Cornerstone</p>
	X $\pm$ .012(0.30)	X $\pm$ 5'	FRANK	18/JUN/13	FFC10046-XXSSX126W5M	FFC10046	
	X.X $\pm$ .008(0.20)	.X $\pm$ 2'	CHECKED BY	DATE	TITLE FPC/FFC Connector 1.00mm SMT		
	X.XX $\pm$ .006(0.15)	.XX $\pm$ 1'	JACOB	18/JUN/13	THIS DRAWING CONTAINS INFORMATION THAT IS PROPRIETARY TO TXGA INDUSTRIAL ELECTRONICS(S.Z)CO.,LTD AND SHOULD NOT BE USED WITHOUT WRITTEN PERMISSION		
SCALE 5:1	SIZE A4	X.XXX $\pm$ .004(0.10)	.XX $\pm$ 0.5'	DRAWN BY	DATE	REV 3	SHEET NO. 3/3
				CHERRY	18/JUN/13		